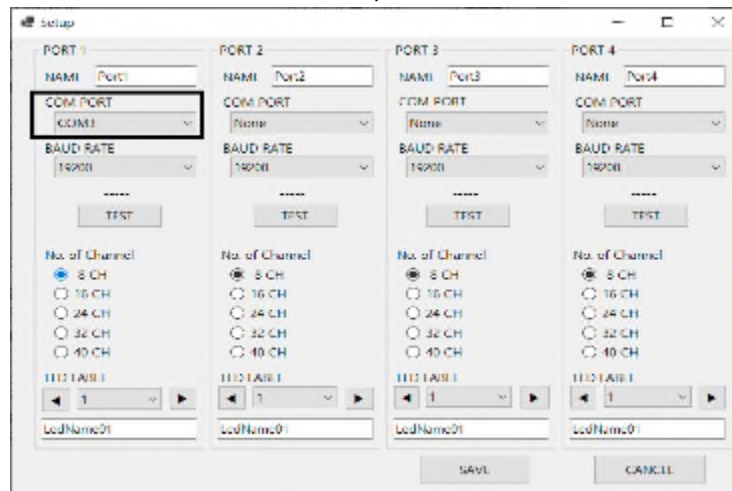
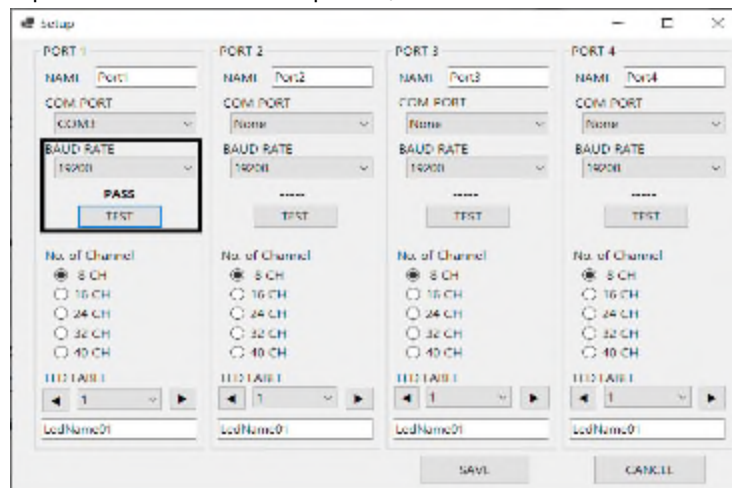


How to set the Communication between ANS ↔ PC

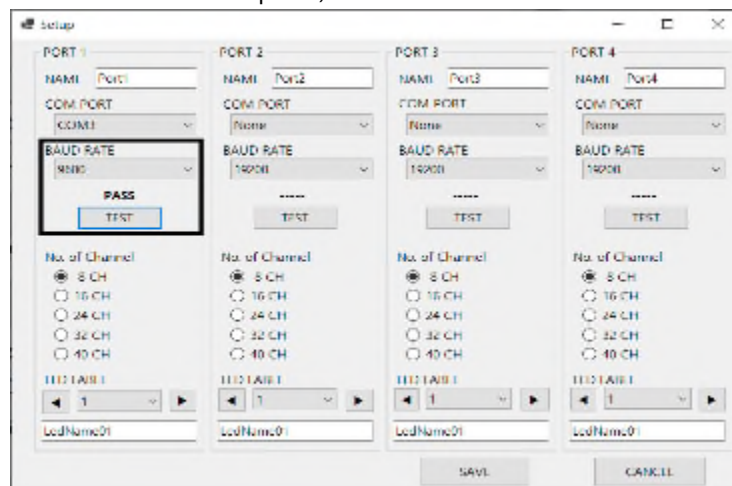
- 1) Connect the RS485 Communication cable between ANS ↔ PC and Power(Rating Voltage).
- 2) Enter to the Setup screen in the PC and Select the port which connected to RS485 Communication cable.



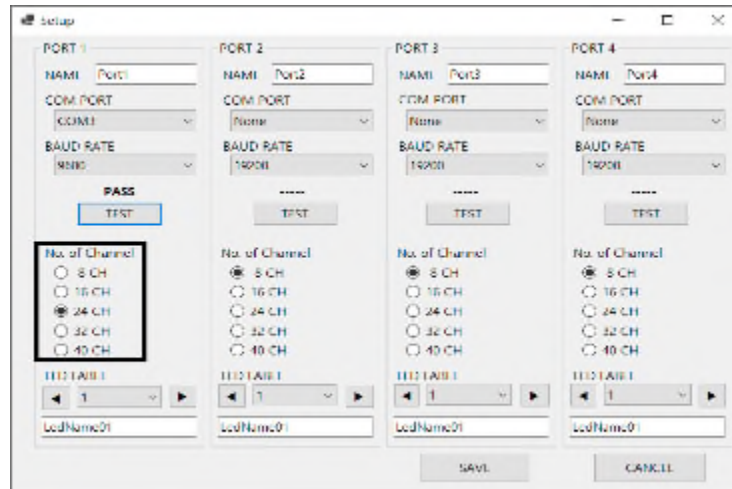
- 3) Test the Communication between ANS ↔ PC by pressing Test Button.
("PASS" will be show up when the test is completed)



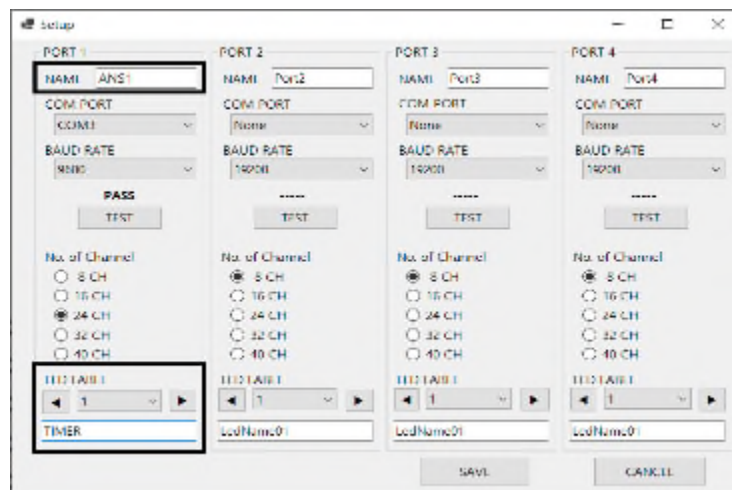
- 4) When it shows "FAIL", Change the speed of Communication in order from 19200 to 2400(19200 → 9600 → 4800 → 2400) and Test again.
(When "PASS" shows up at a certain speed, please use the speed. And try to do the same test several times to find an accurate communication speed)



- 5) After completing Commucation Test, select the channel number according to the product.
(If there is not the same channel number to the product, please select the closest number of channel to the product)



- 6) Set the name of port and the name of LED.



- 7) Save the setting by pressing Save Button and check if the monitoring program is working normally.

