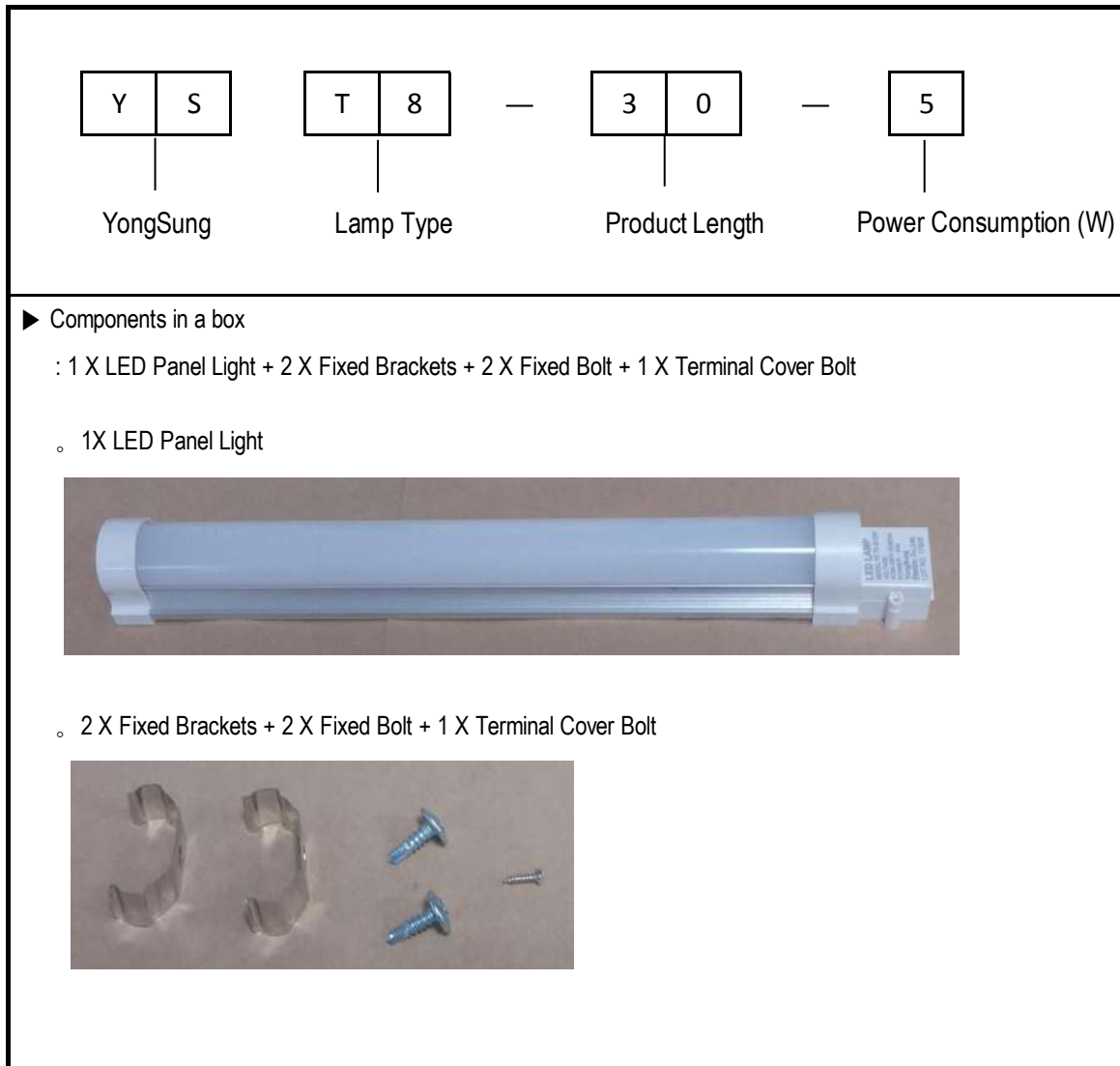




# YONGSUNG ELECTRIC CO.,LTD

## ■ Double Ends LED Light

### ● Type Classification diagram



### ● Application

- As it has high efficiency of lightening with a long life time, good to use inside of Switchgear.

### ● Features

- It is used high intensity LED lamp
- The terminal block for Power is sealed by cover.
- Simple and easy to install the LED light by using brackets.

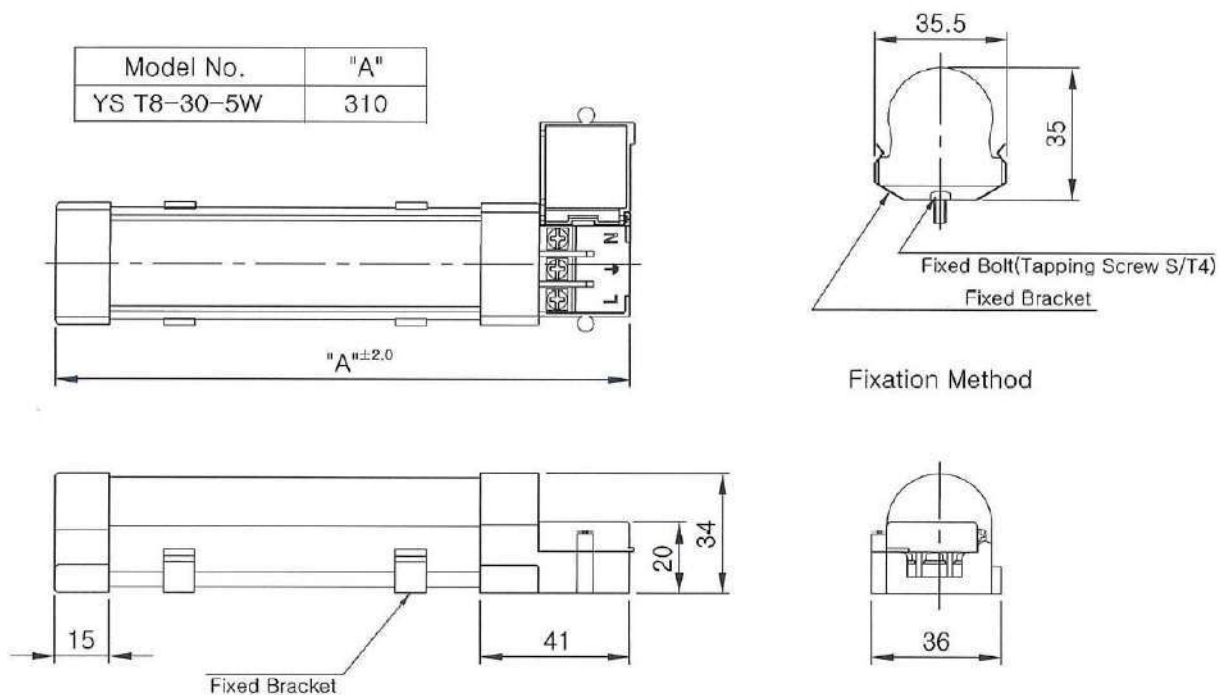
### ● Performance Summary

Sort	YS T8 - 30 -5W
Rating Voltage	85~265VAC, 100~240VDC, 50/60Hz
Rating Current	Max.35
Rating Power	5±5%
Withstand Voltage	AC2,000V / 1Min
Insulation resistance	above 100MΩ(DC500V. Meg)
Working temperature range	-20°C~+55°C
Preserving temperature range	-20°C~+85°C
Relative humidity	45~85%
Altitude	Below 2,000m
Life Time	Over 50,000 hours
IP rating	IP20
Terminal Screw	M3.0, 0.5~0.85 N•m
Size(W x H x D : mm)	310 x 36 x 34

## ● Parts & Materials

Part	Material
Body	Aluminium
Cover	PC diffusion resin
Terminal Block	Polycarbonate resin
Bracket	Stainless steel
PCB	Epoxy sheet(FR-4)

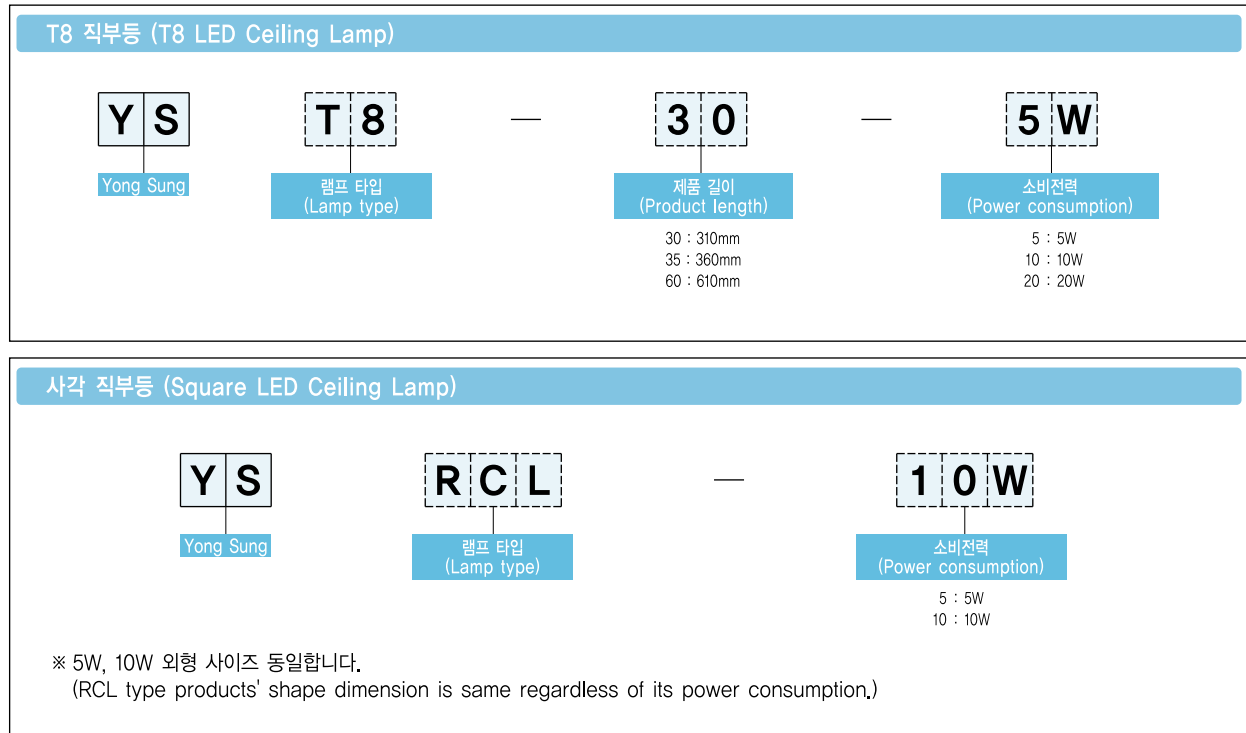
## ● Shape / Dimension Drawing



## 8-7

직부등  
LED Ceiling Lamp

## 형식 구분도 | Type Classification Diagram |



## 용도 | Application |

- 직부등은 높은 조명 효율과 뛰어난 연색성을 가진 제품으로서 긴 수명과 일정한 광속 이상을 가진 LED 조명등으로 Switchgear Panel 내부에 적합한 조명등입니다.
- It is appropriate to use inside Switchgear Panels due to its high lighting efficiency, great color rendering and long life expectancy.

## 특징 | Features |

- 고휘도 LED칩 사용하여 기존 직부등에 비해 매우 밝음.
- 전원 단자대 구조와 충전부 커버 일체화. (배선부 작업성 및 안전성 향상)
- 부착 취부에 대한 최적 조건. (브라켓 부착방식)
- 전원 공급 장치 내장형.
- By using high luminance LED chip, it is greatly brighter than the existing LED panel light product.
- Integration of structure of terminal block and live part cover. (Increases usability of wiring work and stability)
- Optimum condition for attachment. (Bracket attachment method)
- Power supply device built-in type.

## 성능 개요 | Performance Summary |

형식 (Type)	YS T8-30-5W	YS T8-35-10W	YS T8-60-20W	YS RCL-5W	YS RCL-10W
정격전압(V) (Rated voltage)	AC220 50/60Hz				
허용전압(V) (Allowable voltage)	AC100V~240V 50/60Hz, DC100V~240V				
정격전류(mA) (Rated current)	Max,25	Max,45	Max,90	Max,25	Max,45
전력(W) (Power)	5±5%	10±5%	18±5%	5±5%	10±5%
광속 (Lumens) (Initial rated lightoutput)	Below 400	Below 800	Below 1,400	Below 400	Below 800
내전압 (Withstanding voltage)	AC 2,000V/1min			AC 2,800V/1min	
절연저항 (Insulation resistance)	100MΩ 이상 (Above 100MΩ) (DC 500V. Meg)				
사용주위온도 (Ambient temperature)	-20 ~ +50 °C (다만, 결빙·결로가 없는 곳) (At the place with no freezing and condensation)				
보존온도 (Preserving temperature)	-20 ~ +85°C 및 24시간을 넘지 않는 단기간으로 +70°C이하 (-20 ~ +85°C and below +70°C for less than 24 hrs)				
상대습도 (Relative humidity)	45 ~ 85%				
표고 (Altitude)	2,000m 이하 (Below 2,000m)				
수명(hrs) (Life time)	≥ 50,000				
보호구조 (Protection rating)	IP20				
단자나사/조임토크 (Terminal screw/Torque)	M3 / 0.5 ~ 0.8 N・m				
크기 (W×H×D:mm)(Size)	310×36×34	360×36×34	610×36×34	239×65×30	
적합전선 (Suitable wire)	1.5mm <sup>2</sup>				

전력 (Power)	전광속(lm) (Total luminous flux)	광속(lm/W) (Luminous flux)	색온도(k) (Color temperature)	연색성(Ra) (Color rendering)	램프역율(PF) (Lamp factor)
5W	≥400	≥80	6500	≥80	≥0.6
10W	≥800	≥85	6500	≥80	≥0.7
20W	≥1600	≥90	6500	≥80	≥0.9

## 부품 재질 | Part Materials |

부품 (Part)	재질 (Material)	
	T8	RCL
몸체 (Body)	알루미늄 (Aluminium)	PC 난연 수지(V-2) (Polycarbonate resin)
커버 (Cover)	광확산 PC 수지(V-2) (Light diffusion PC resin)	
PCB	Epoxy sheet (FR-4)	
단자나사 (Terminal screw)	탄소강 (니켈 도금) (Carbon steel (Ni plating))	
터미널블럭 (Terminal block)	PC 난연 수지(V-2) (Polycarbonate resin)	-
부착판 (Bracket)	스테인리스 (Stainless steel)	-

## 외형 / 치수도 | Shape / Dimension Drawing |

(unit : mm)

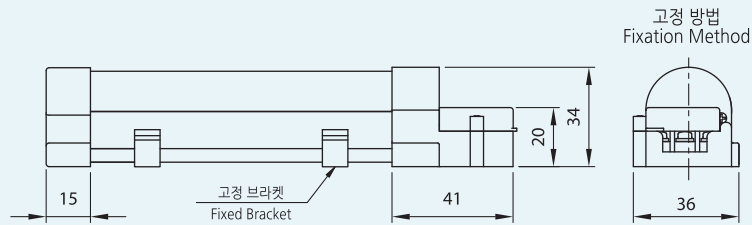
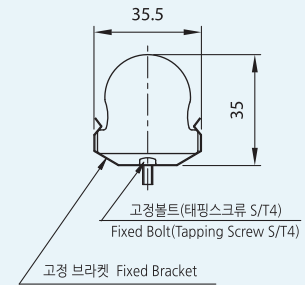
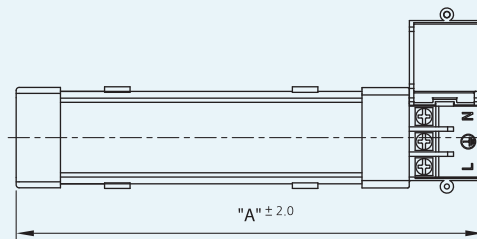
## T8



전파인증  
(Certified electric  
wave by Korean  
Certification.)

"A" 치수 구분

Model No.	"A"
YS T8-30-5W	310
YS T8-35-10W	360
YS T8-60-20W	610



## RCL

